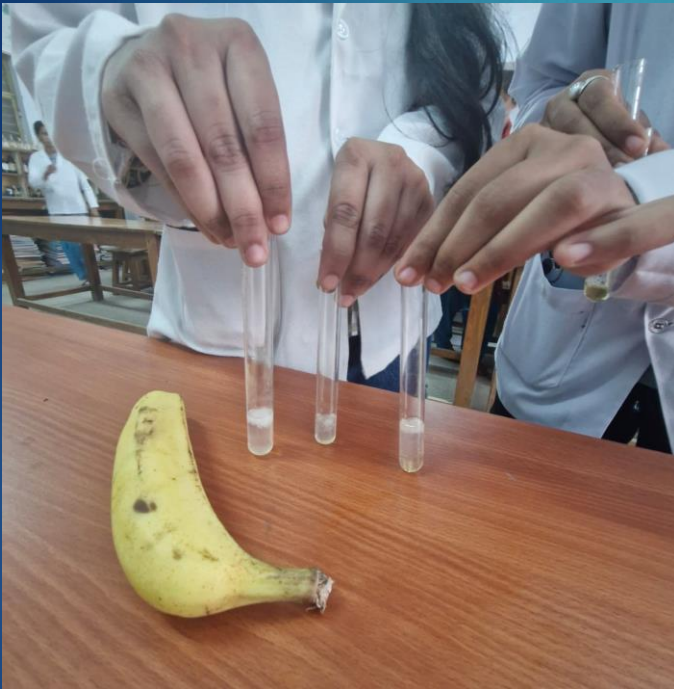


Students performing various experiments at Biotechnology laboratory including Enzyme Immobilization, Gel Electrophoresis, isolation of microbes etc





Students performing various experiments including genomic & plasmid DNA isolation, RIA, ELISA, Conjugation, transduction, biotransformation, fermentation, enzyme kinetics etc



GPS Map Camera  
Jabalpur, Madhya Pradesh, India  
5W6G+GR6 Dev Book And Steshnri, Govt MH college, Napier Town, Jabalpur, Madhya Pradesh  
482002, India  
Lat 23.161721°  
Long 79.926227°  
20/02/24 11:11 AM GMT +05:30



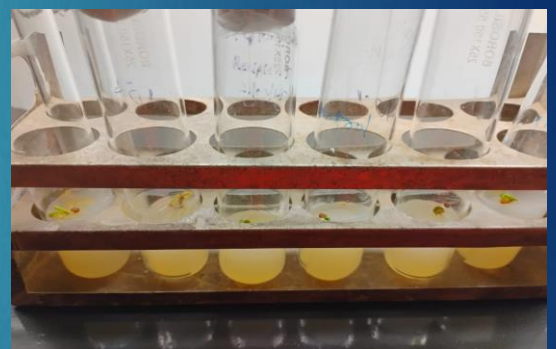
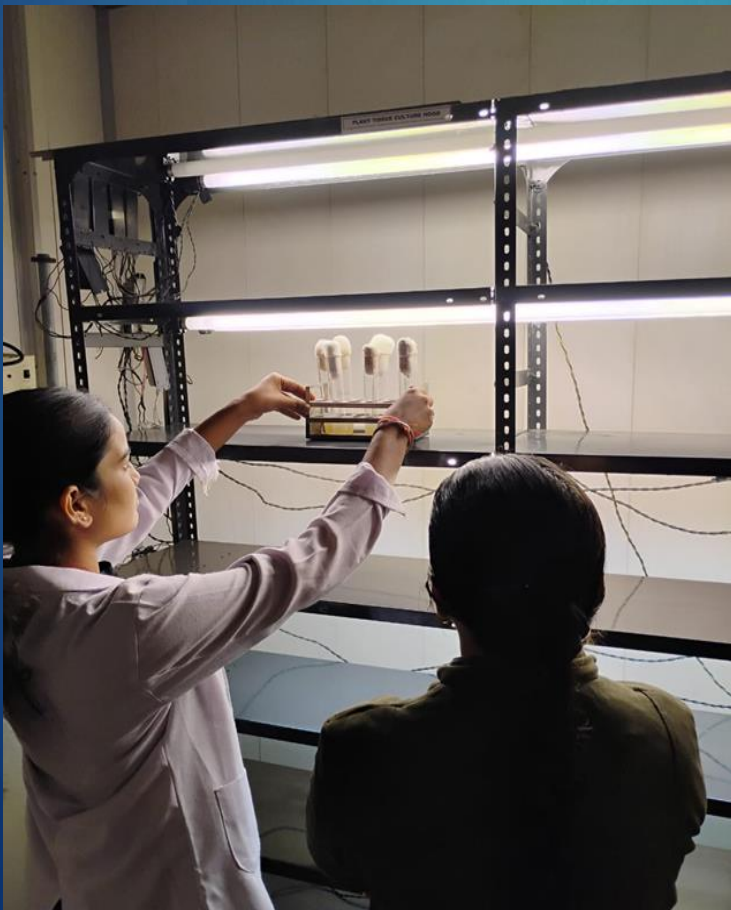




## Students Learning Animal Biotechnology



## Students Learning Fermentation Technology



## Students Learning Plant Tissue Culture